

Eclipse ThermJet

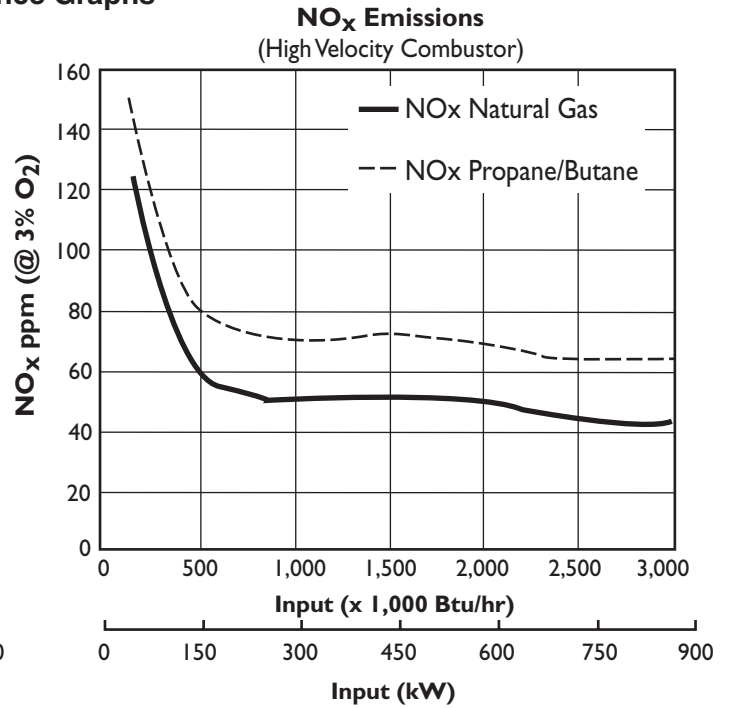
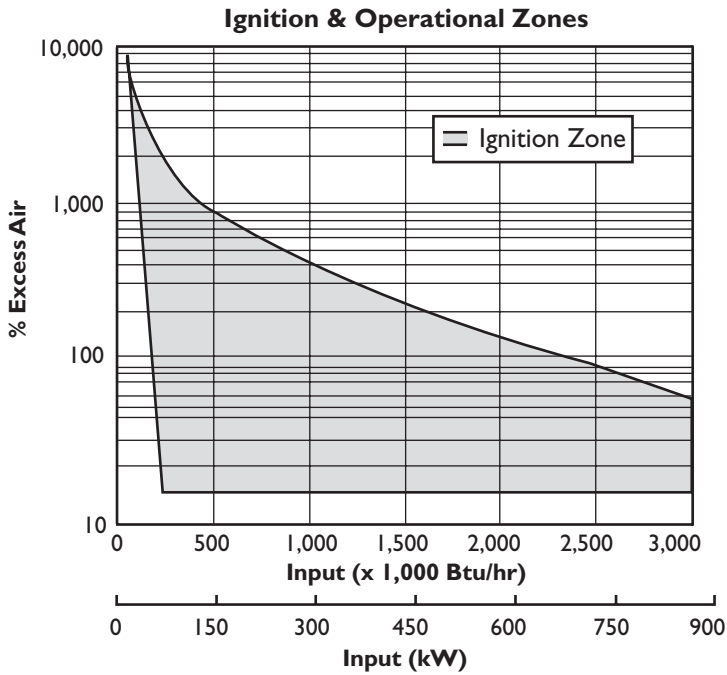
Burners

Model TJ0300
Version 2

PARAMETER	BURNER VELOCITY	MODEL TJ0300
Maximum input Btu/hr (kW)	Medium & High Velocity	3,000,000 (879)
Minimum Input, on-ratio Btu/hr (kW)	Medium & High Velocity	300,000 (88)
Minimum Input, fixed air Btu/hr (kW)	Medium & High Velocity	60,000 (18)
Gas inlet pressure required "w.c. (mbar) • Fuel pressure at gas inlet (Tap "B" – see page 3)	High Velocity	Nat. Gas Propane Butane 12.5 (31.0) 12.7 (32.0) 12.2 (30.0)
	Medium Velocity	Nat. Gas Propane Butane 6.0 (15.0) 6.8 (17.0) 6.0 (15.0)
Air inlet pressure required "w.c (mbar) • 15% excess air at maximum input (Tap "A" – see page 3)	High Velocity	Nat. Gas Propane Butane 15.0 (38.0) 15.0 (38.0) 15.0 (38.0)
	Medium Velocity	Nat. Gas Propane Butane 8.5 (21.0) 8.5 (21.0) 8.5 (21.0)
High Fire Flame Length Inches (mm) (measured from end of combustor)	High Velocity	Nat. Gas Propane Butane 50 (1270) 55 (1400) 55 (1400)
	Medium Velocity	Nat. Gas Propane Butane 64 (1630) 66 (1675) 68 (1730)
Maximum flame velocity ft/s (m/s) • 15% excess air, at maximum input	High Velocity	500 (152.4)
	Medium Velocity	250 (76.2)
Maximum combustion air temperature	300° F (149 °C) For higher temperatures, use TJPCA (Data 206)	
Flame detection	U.V. scanner only. (Available for all combustors.)	
Fuel	Natural Gas, Propane, Butane For any other mixed gas, contact Eclipse for orifice sizing.	

- All information is based on laboratory testing in neutral (0.0" w.c.) pressure chamber. Different chamber size and conditions may affect the data.
- All information is based on standard combustor design. Changes in the combustor will alter performance and pressures.
- All inputs based upon gross calorific values.
- Eclipse reserves the right to change the construction and/or configuration of our products at any time without being obliged to adjust earlier supplies accordingly.
- Plumbing of air and gas will affect accuracy of orifice readings. All information is based on generally acceptable air and gas piping practices.
- Do not install the burner with the gas inlet rotated 90° clockwise with respect to the air inlet if operating on natural gas using a flame rod.

Performance Graphs

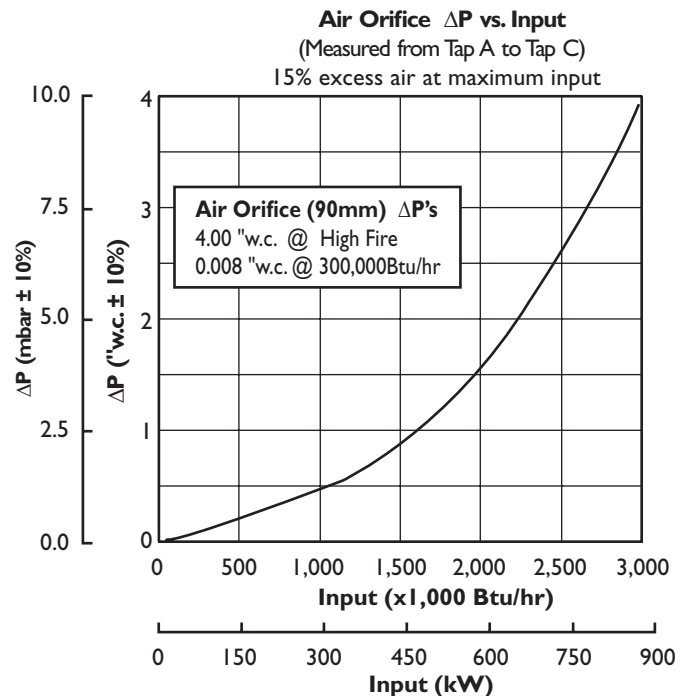
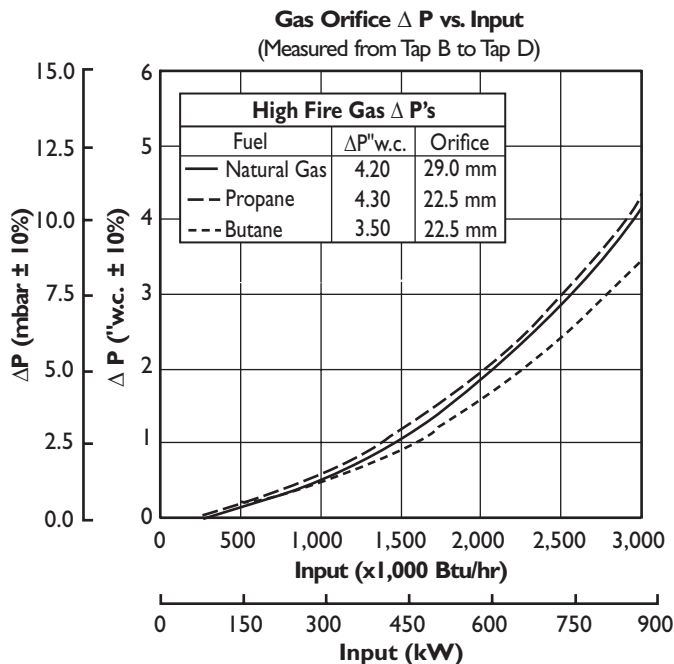


Correction factor for medium velocity combustor is 1.20
 On Ratio: Combustion air is adjusted to 3% O₂ at any given input.

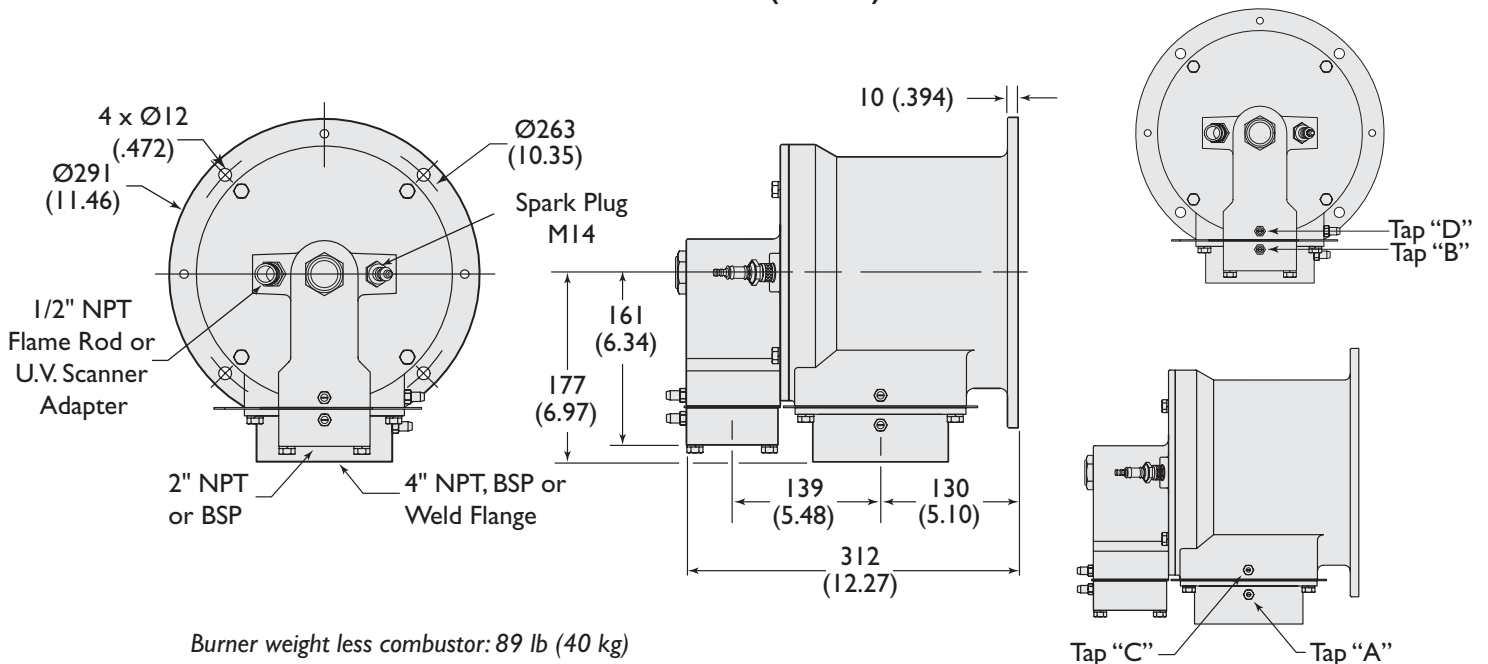
Emissions from the burner are influenced by:

- fuel type
- combustion air temperature
- firing rate
- chamber conditions
- percent of excess air

For estimates of other emissions, contact Eclipse.

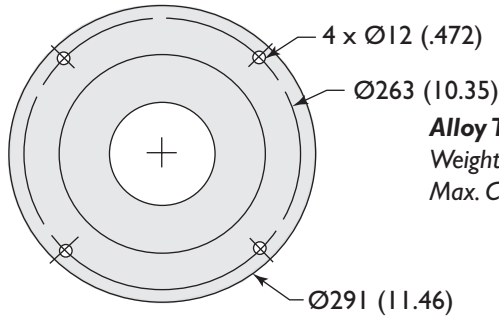
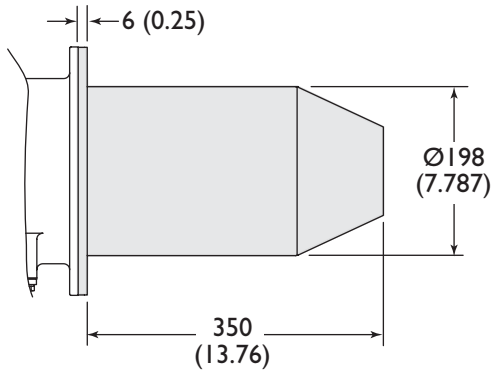


Dimensions & Specifications
Millimeters (Inches)

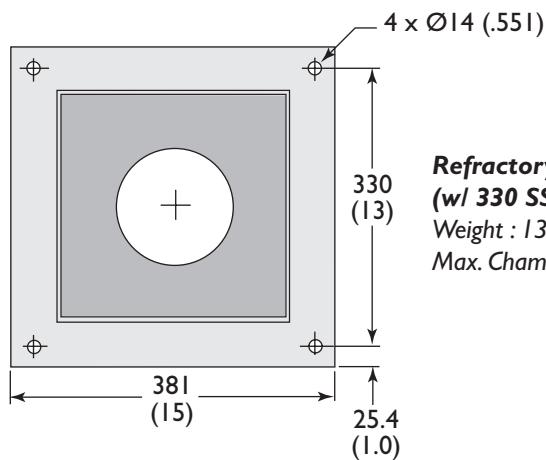
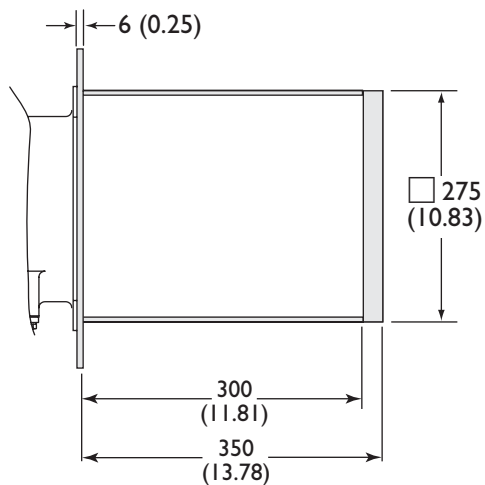


Combustor

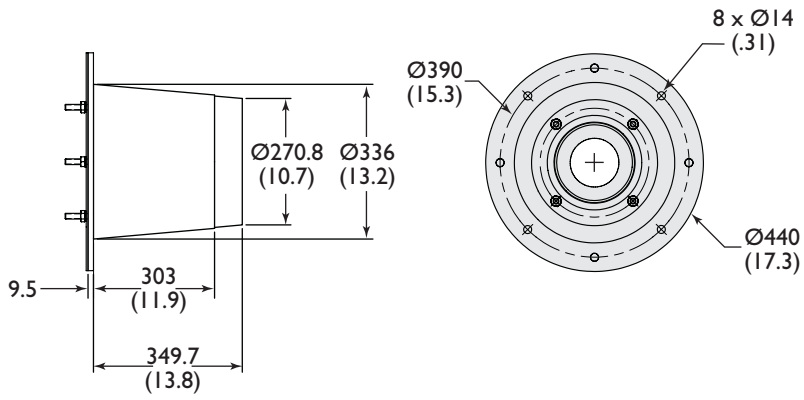
Exhaust outlet diameter : High Velocity : Ø100 (3.937)
Medium Velocity : Ø135 (5.315)



Alloy Tube (AISI 310)
Weight : 13.5 lb (6 kg)
Max. Chamber Temp: 1,750°F (950°C)



Refractory Block (w/ 330 SS wrapper)
Weight : 131.4 lb (60 kg)
Max. Chamber Temp: 2,800°F (1535°C)



Down Firing Block
 Weight: 135 lb (61.23 kg)
 Max. Chamber Temp: 2800°F (1535°C)



Offered By:

Power Equipment Company
2011 Williamsburg Road
Richmond, Virginia 23231
Phone (804) 236-3800
Fax (804) 236-3882

www.peconet.com